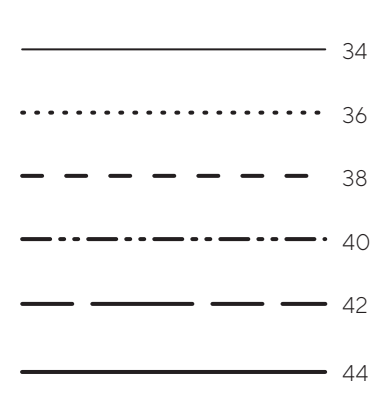




Flared & Straight-legged Trousers (1 of 2)

PROJECT DESIGN © LOVE PRODUCTIONS 2020
THIS DESIGN IS PROTECTED BY COPYRIGHT
AND MUST NOT BE MADE FOR RESALE.
1.5 CM (5/8 IN) SEAM ALLOWANCE INCLUDED (UNLESS OTHERWISE STATED)

SIZING KEY



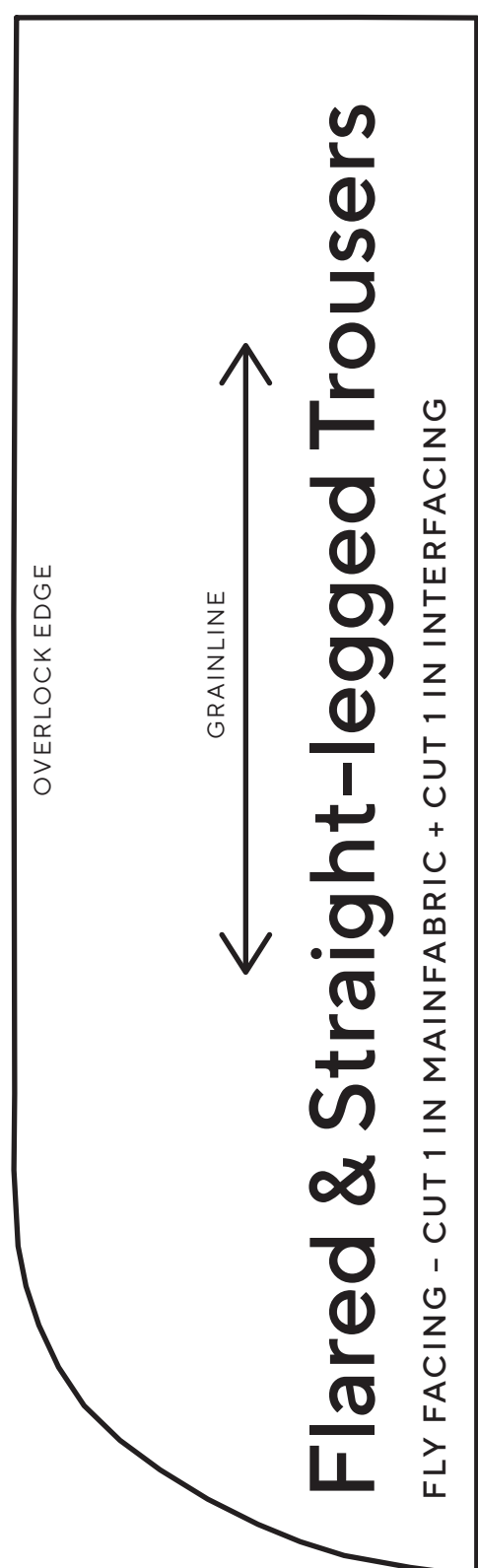
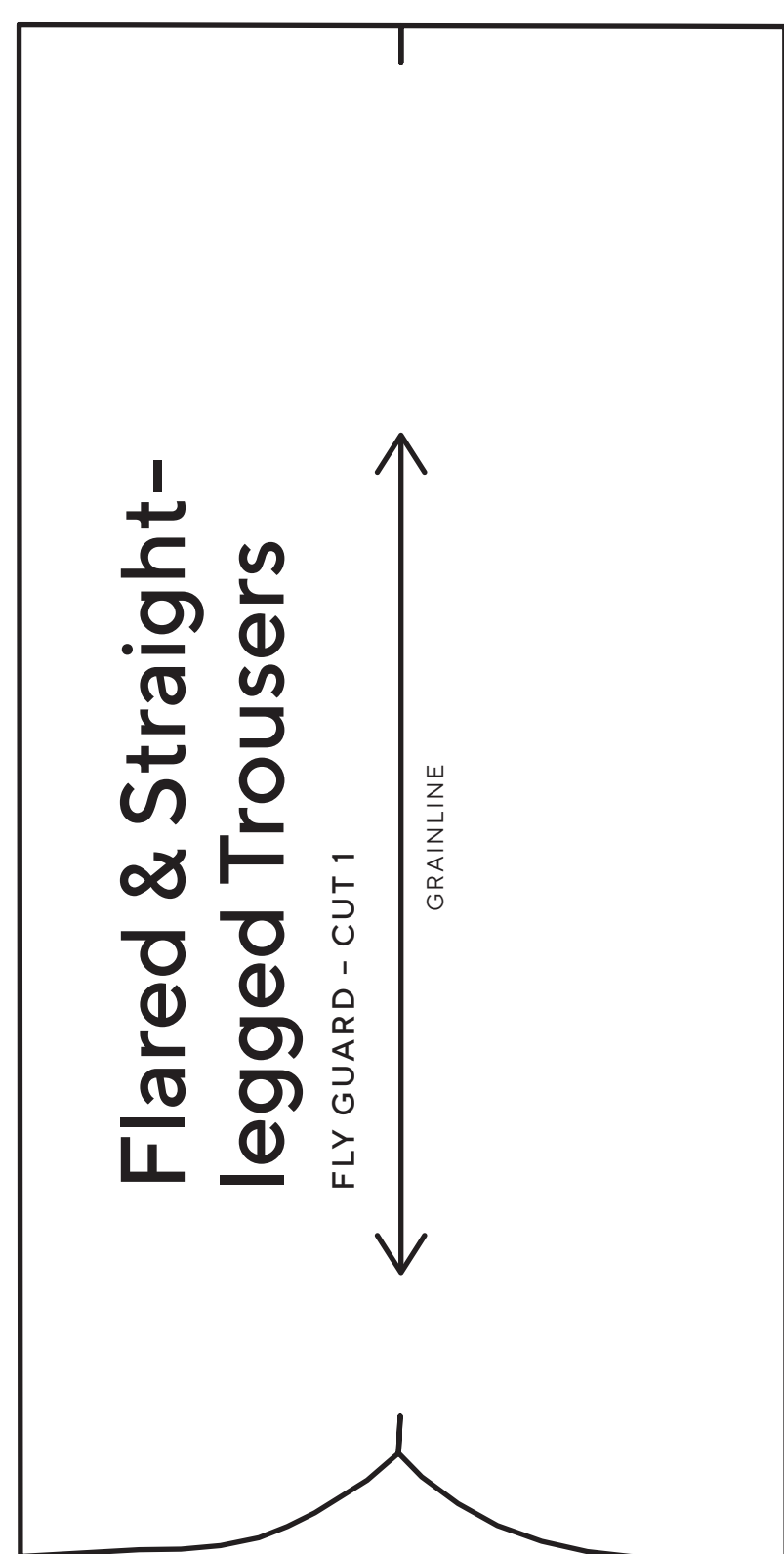
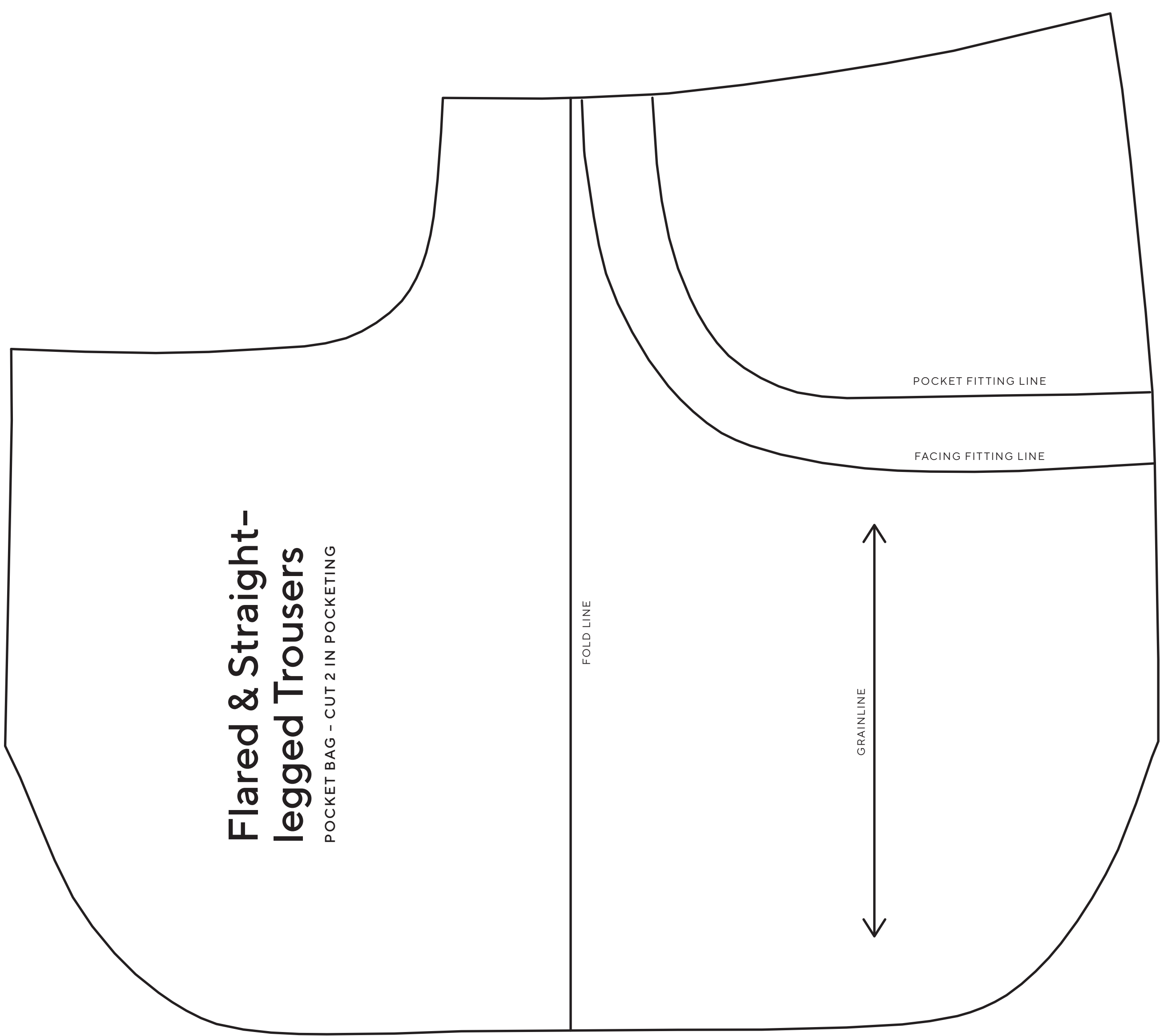
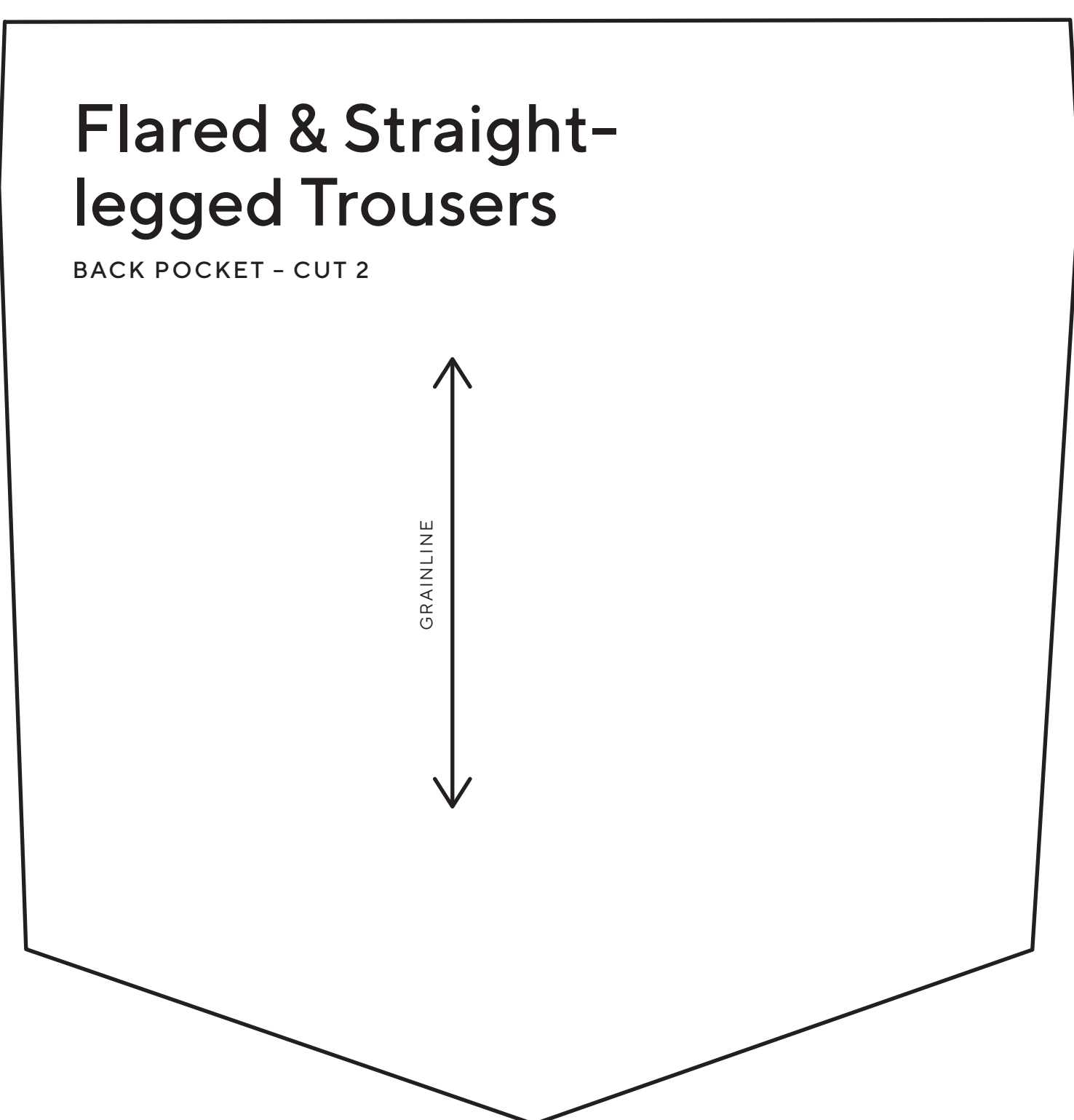
Flared & Straight-legged Trousers

BELT LOOP - CUT 5



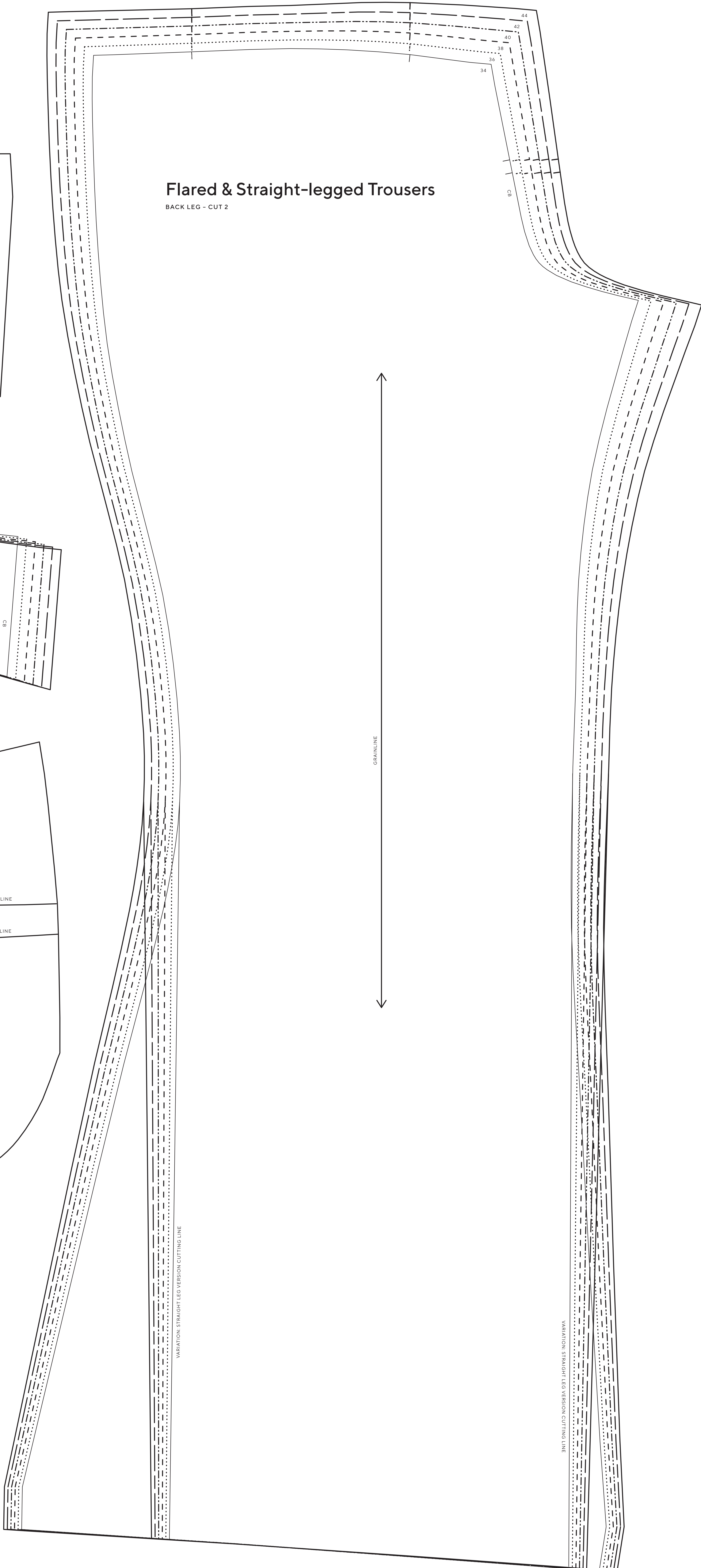
Flared & Straight-legged Trousers

BACK POCKET - CUT 2



Flared & Straight-legged Trousers

BACK LEG - CUT 2



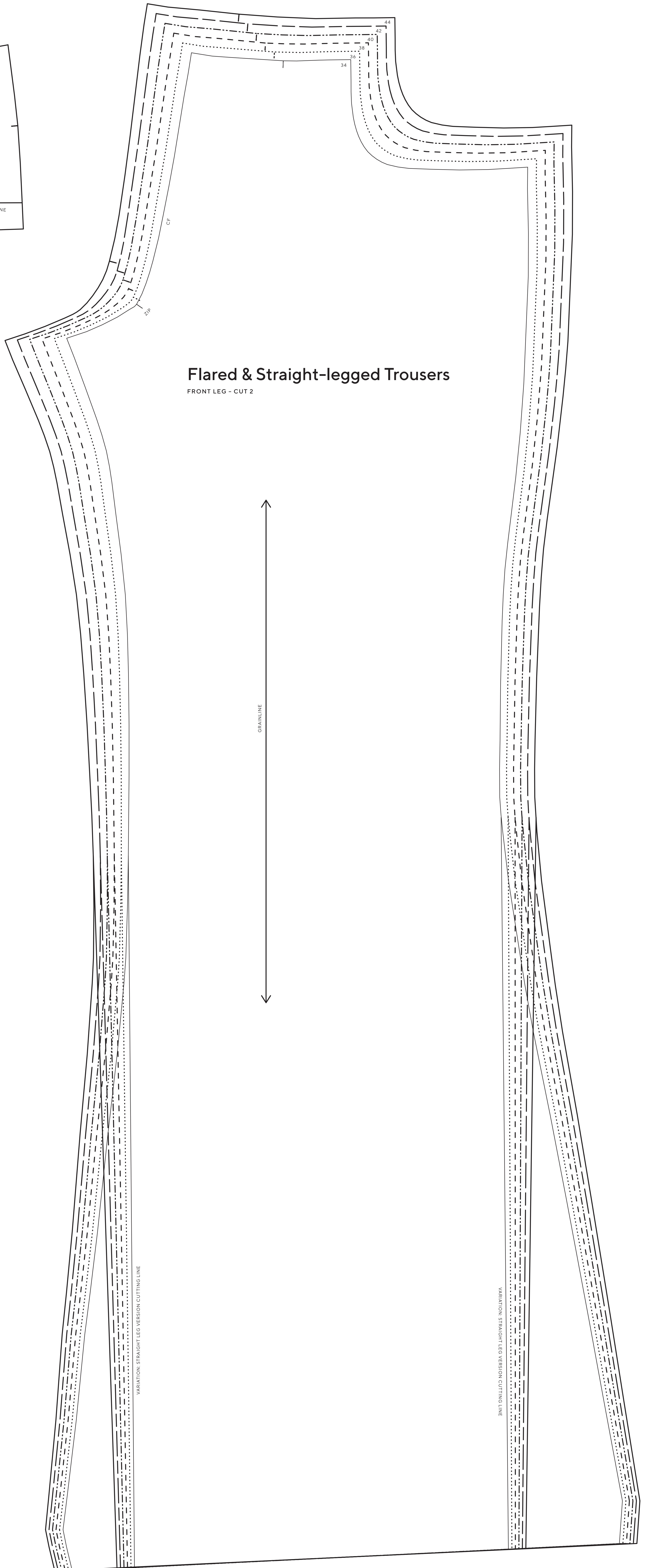
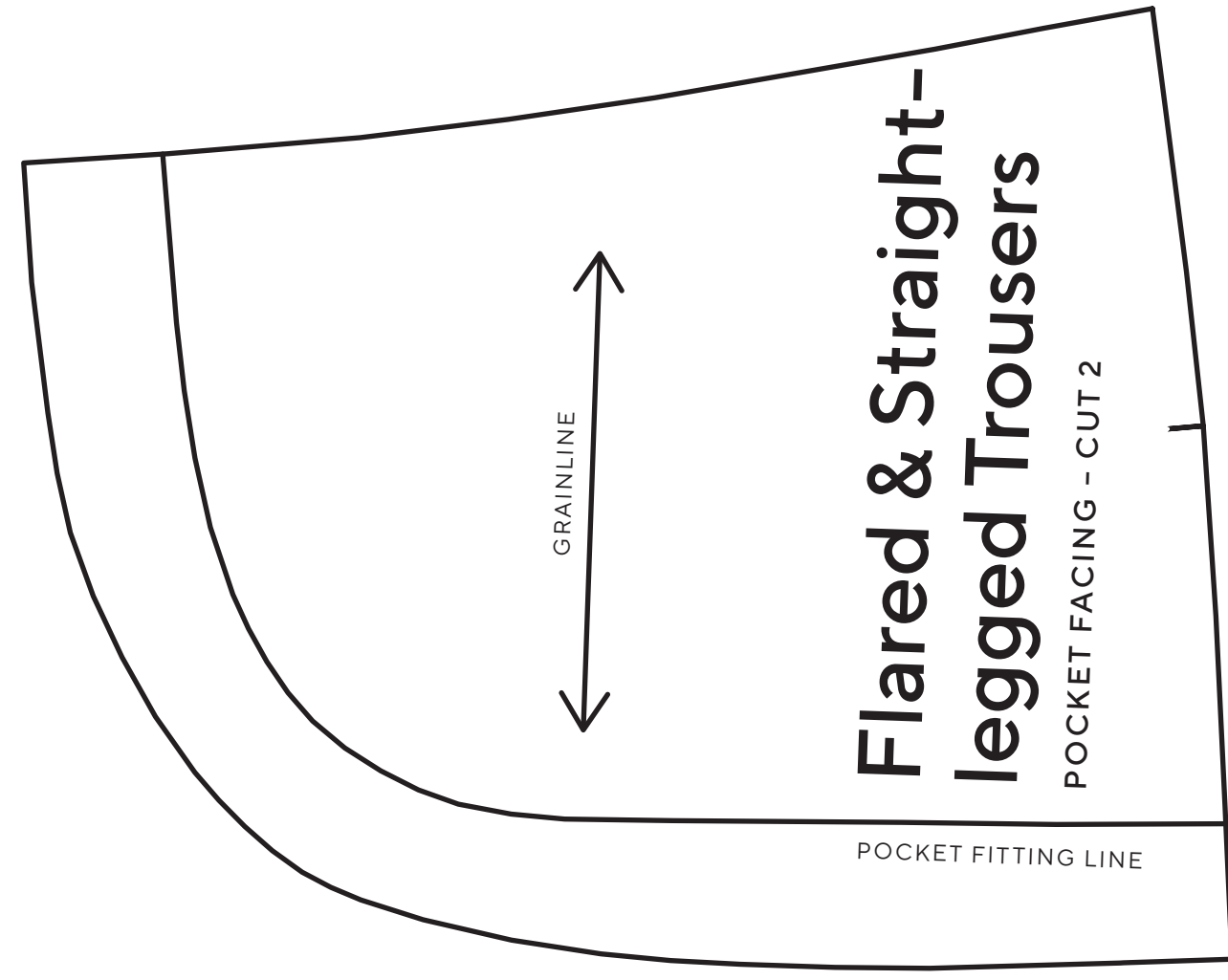
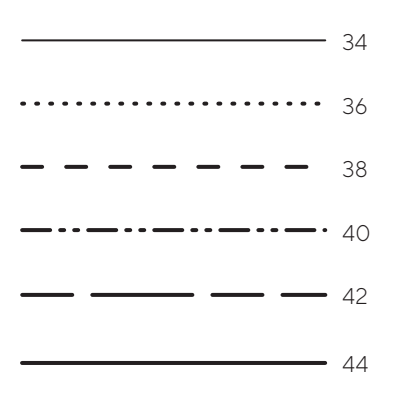
VARIAION: STRAIGHT LEG VERSION CUTTING LINE



**Flared & Straight-legged
Trousers (2 of 2)**

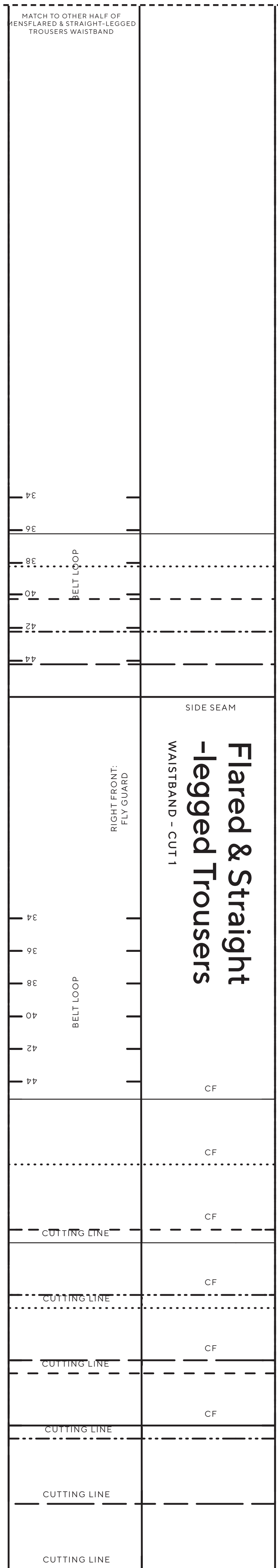
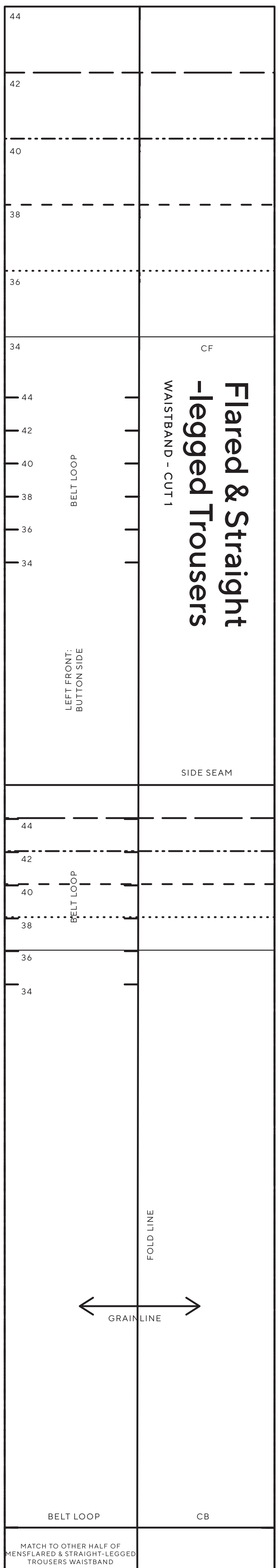
PROJECT DESIGN © LOVE PRODUCTIONS 2020
THIS DESIGN IS PROTECTED BY COPYRIGHT
AND MUST NOT BE MADE FOR RESALE.
1.5 CM (5/8 IN) SEAM ALLOWANCE INCLUDED (UNLESS OTHERWISE STATED)

SIZING KEY



Flared & Straight-legged Trousers

FRONT LEG - CUT 2



variation: straight leg version cutting line

variation: straight leg version cutting line